



BAGGAGE TRACTOR- NEW STD-KM20

CAPACITY
4,500 Lbs. DBP



BRAND	STANDARD GSE
MODEL	STD-KM20
CAPACITY	4,500 Lbs. DBP
ENGINE	Nissan K25 Gasoline
TRANSMISSION	Graziano PST2
YEAR	2,019
CONDITION	New
DELIVERY TIME	In stock

NEW IN STOCK



Nissan K25 Engine
Gasoline 2.5l 4 Cylinder
2500 RPM 60 HP
Made in Japan

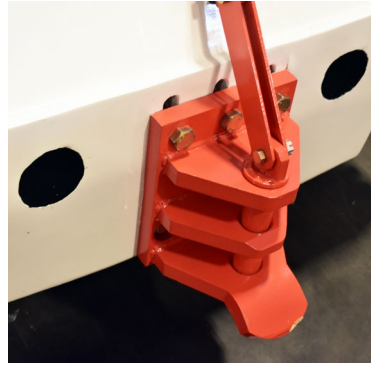


Graziano Transmission
Made in Italy





Two-Stage Towing Bar



Easy driver control
Towing Bar Pin



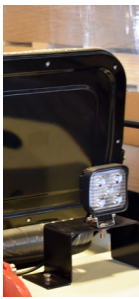
Easy driver control
Two-Stage Towing



Smart independent
front suspension



Two Speed
Automatic Shifter



FEATURES

- Cyclone air cleaner
- Alternation with IC regulator
- Integrated ignition assembly
- Neutral Safety Switch
- Super Preheater control system
- Engine key stopping device
- Oil water deposit ion separator
- Head Lamp
- Lasso type hand brake Power-assisted
- Pin type two-stage towing bar
- Rear Combination Lamps
- Integrated control Center
- Odometer
- Speed meter
- Electric Horn
- Engine Cover Shock Pad Power-assisted steering
- Independent front suspension steering system
- Lasso type hand brake